

SL620 III

Ready-to-use photo printing system



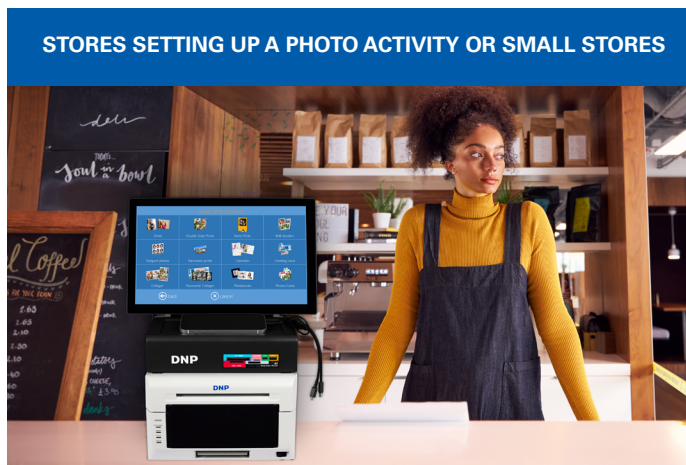
- ▶ **COMPACT & LIGHTWEIGHT**
- ▶ **READY TO PRINT**
- ▶ **MAXIMISED CONNECTIVITY**
- ▶ **MULTIPLE PHOTO FORMATS & PRODUCTS AVAILABLE**
- ▶ **SUITABLE FOR ID PHOTOS**
- ▶ **INTEGRATED EVENT MODE**

DT-T90 1-YEAR GUARANTEE
DS620 2-YEAR GUARANTEE

Your partner to launch your photo activity with great ease!

The SL620 III is an all-in-one kiosk made up of the DT-T90 photo order terminal with the SnapLab+ software and a DS620 dye sublimation printer.

Autonomous thanks to its intuitive SnapLab+ software, the SL620 III enables professional or self-service use for your customers. Even in a limited space, you can propose an in-store photo printing service or take it to all your events.



SL620 III

A wide range of products thanks to the 40 formats* available

- ▶ Print
- ▶ Panoramic print
- ▶ Print with borders or frames
- ▶ Collage
- ▶ Greeting card
- ▶ Calendar
- ▶ ID photo



A wide range of formats with the DS620: from the smallest 5 x 15 cm bookmark format to the largest 15 x 35 cm & 15 x 50 cm panoramic formats!
Plus 5 available finishes: glossy, matte, fine matte, luster & partial matte.

**Depending on the DNP printer(s) connected*

A biometric* ID photo service

- ▶ The software analyses, checks and validates compliance of identity photos with the official requirements of each country.
- ▶ Quick and easy to use for all biometric passport applications and official identity photos.



**Available as an option*

A mode for your events

- ▶ Its **event mode** enables personalisation of the photo frames, printing formats and terminal screen to match the event colours.
- ▶ It only takes the guests a few clicks to print their photos, thanks to the simplified printing flows.

A ready-to-print compact photo kiosk

- ▶ Its small footprint that's perfect for small stores, and its light weight design that makes it easy to transport to all your events.
- ▶ Once the system has been connected, the SnapLab+ software starts as soon as the system is switched on.
- ▶ For users, the multiple image sources simplify their order process: USB port, SD, micro SD, MS, MS micro, xD, CF, smartphone cables, transfer via WiFi / Bluetooth for Android / Iphone smartphones.

Guarantee and technical assistance

- ▶ Guarantee period of up to 2 years depending on the equipment, as from the DNP PIE invoicing date.*
- ▶ Need assistance? Contact your distributor or the DNP Photo Imaging team of experts directly.

▶ **By phone:** +33 (0) 149 384711
 Monday to Friday from 9:00 am to 1:00 pm and from 2:00 pm to 6:00 pm
 Saturday from 9:00 am to 1:00 pm and from 2:00 pm to 5:00 pm
 ▶ **By email:** supportadmin.pie@dnp-g.com
 ▶ **or on** <https://www.dnpphoto.eu/en/technical-support/contact>

** Under the general DNP SL620 III guarantee conditions: 1-year guarantee for the DT-T90 and 2-year guarantee for the DS620*

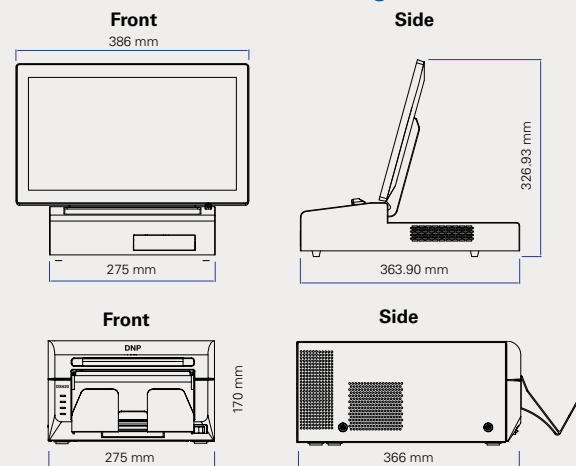


Technical characteristics

Product code	21269001
System dimensions	Screen open: 386 (W) x 366.9 (D) x 496.93 (H) mm
Weight	18.10 kg

	DT-T90	DS620
Dimensions	Screen open: 386 (W) x 363.90 (D) x 326.93 (H) mm Screen closed: 386 (W) x 363.90 (D) x 84 (H) mm	275 (W) x 366 (D) x 170 (H) mm
Weight	6.10 kg	12 kg
Rear interface	USB 3.0 x 2 ports, USB 2.0 x 4 ports, LAN: GbE LAN x 2 ports, ON/OFF button, Power supply input	USB 2.0
Power supply	60 W / 12 V	110-240 V AC 50/60 Hz
Printing rate (approx.)	-	8.4 sec: 4 x 6" (10 x 15 cm)
Screen	230 V, 50 Hz, 400 W	-
PC	Operating system: Windows 10 Embedded (64 bits) Processor: Intel Celeron J6412 Memory: 8 GB, DDR4 Hard disk: SSD 128 GB	-
Mobile connectivity	Wired connection for smartphone: Micro USB, USB type C, Lightning Photo transfer via Bluetooth & WiFi	-
Media reader	SD, Micro SD, MS, MS micro, xD, CF, USB memory	-
Compatible printers	DS620, DS820, DS-RX1HS, DS40, DS80, QW410, DS80DX	-
DNP photo software	SnapLab+	-

Technical drawing



Surface area 0.11 m²



DNP PHOTO IMAGING EUROPE
 22, Avenue des Nations
 95948 ROISSY C.D.G. Cedex
 FRANCE
 Tel: +33 (0) 149 386550
www.dnpphoto.eu